

The Gender Dimension in Visual Interface Design Projects

Assoc. Prof. Stefan Jänicke

*CONFERENCE ON THE GENDER DIMENSION IN RESEARCH
Copenhagen
17/05/2023*

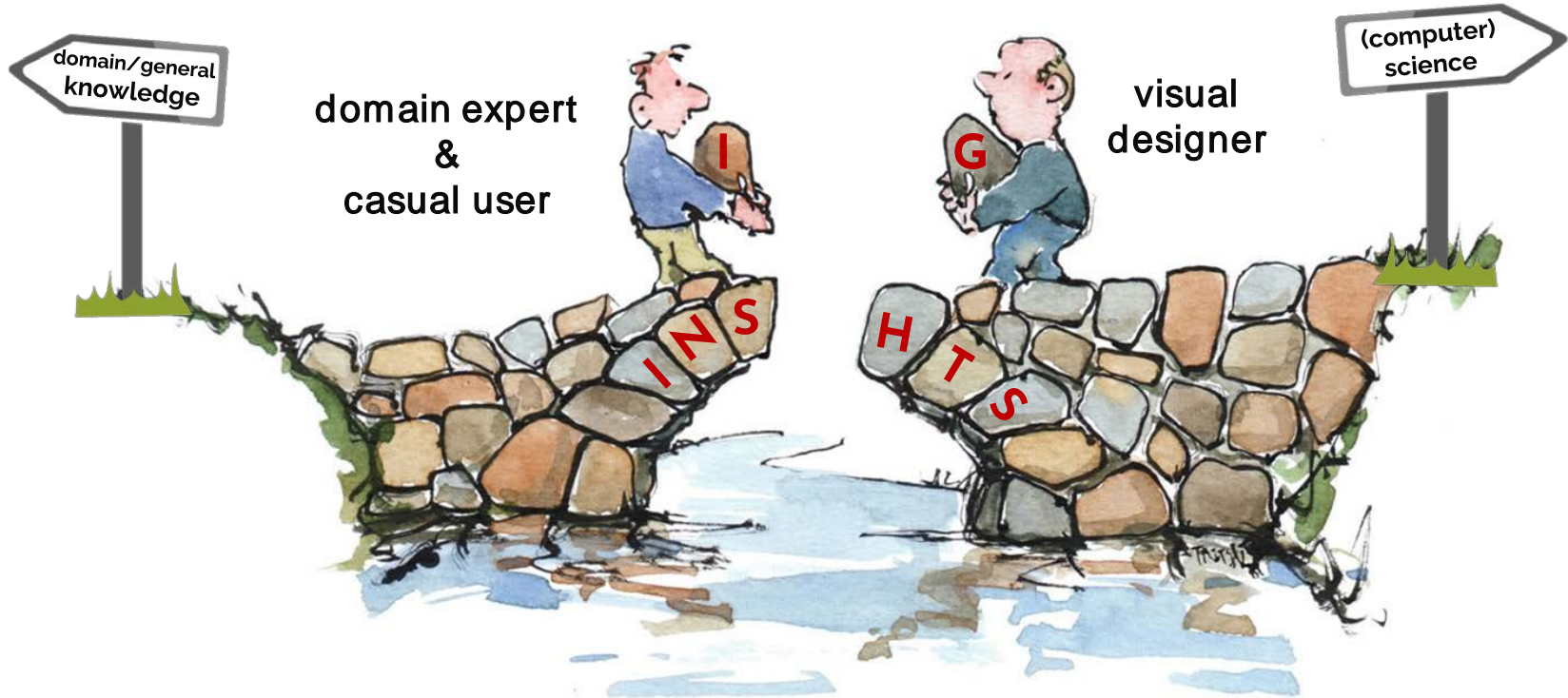


Funded by
the European Union



Building Bridges with Visual Interfaces

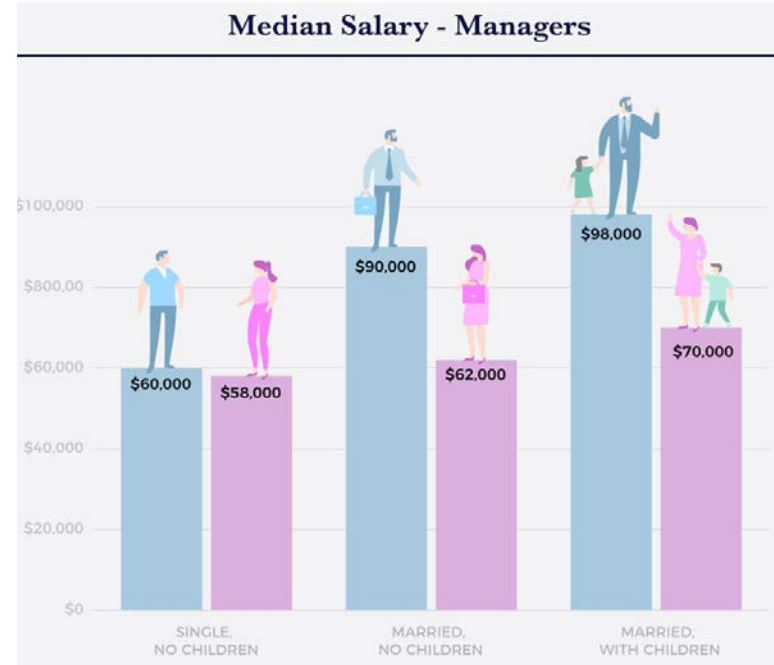
enabling data analytics & science communication



Gender Considerations in Visual Interface Design



avoid using stereotypically coded male/female visuals (icons, colors), and patterns that have historically been used to reinforce a binary and/or fixed view on gender



Schwabish, J., & Feng, A (2021). Do no harm guide: Applying equity awareness in data visualization.
<https://www.urban.org/research/publication/do-no-harm-guide-applying-equity-awareness-data-visualization>.

Gender Considerations in Visual Interface Design



avoid using stereotypically coded male/female visuals (icons, colors), and patterns that have historically been used to reinforce a binary and/or fixed view on gender



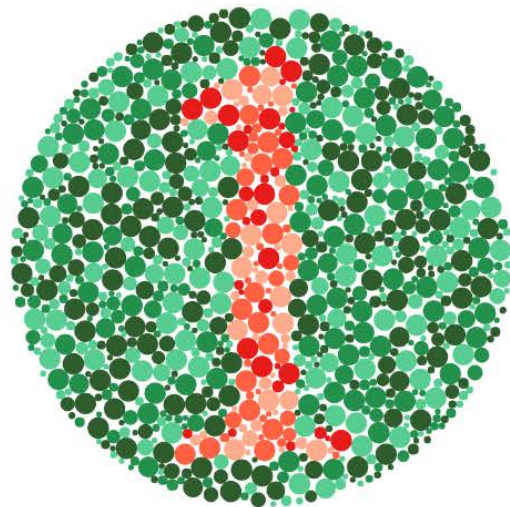
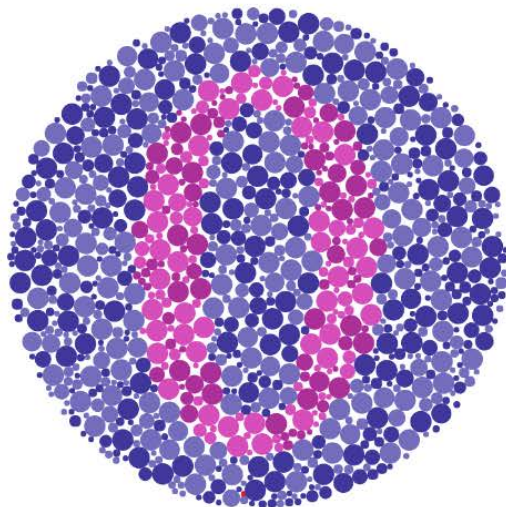
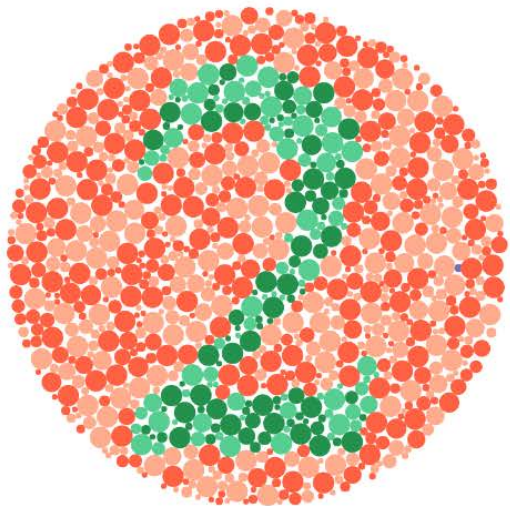
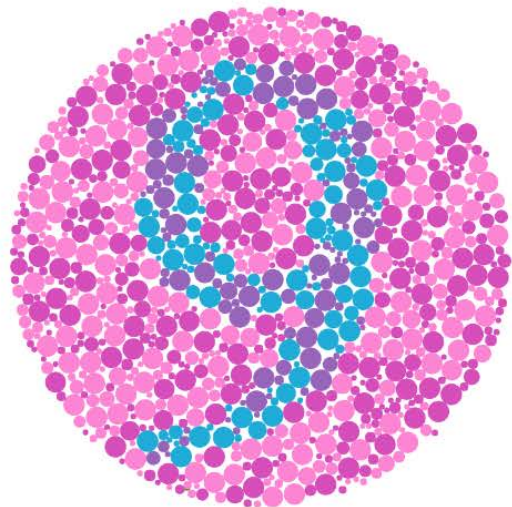
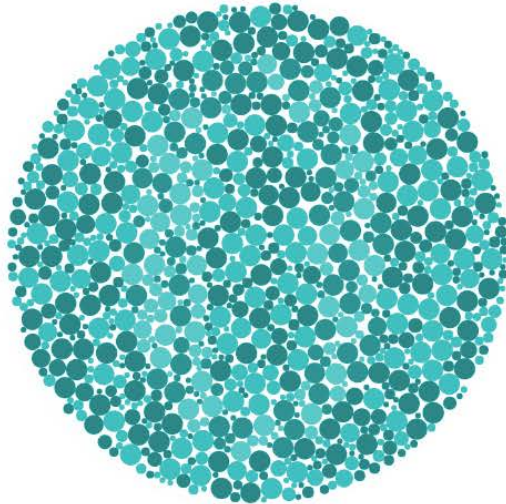
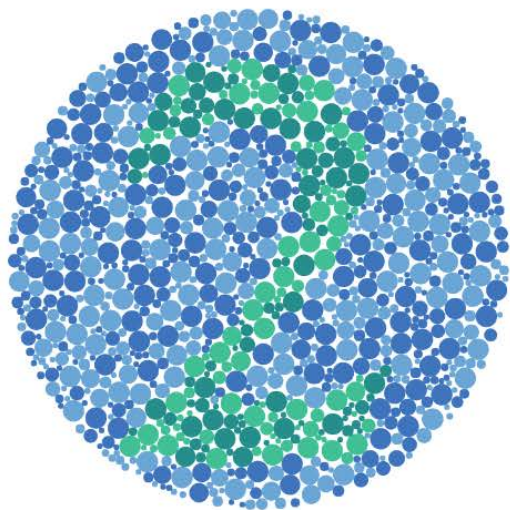
Gender Considerations in Visual Interface Design



avoid using stereotypically coded male/female visuals (icons, colors), and patterns that have historically been used to reinforce a binary and/or fixed view on gender



Schwabish, J., &Feng, A (2021). Do no harm guide: Applying equity awareness in data visualization.
<https://www.urban.org/research/publication/do-no-harm-guide-applying-equity-awareness-data-visualization>.



CORONAVIRUS

New Covid Cases Jump 16% in Rural Counties, Setting New Record

Six out of every 10 rural counties are on the red-zone list. In the Upper Midwest, all but a handful of rural counties are seeing rapid spread of the virus.

by [Tim Murphy](#) and [Tim Marema](#)

October 14, 2020

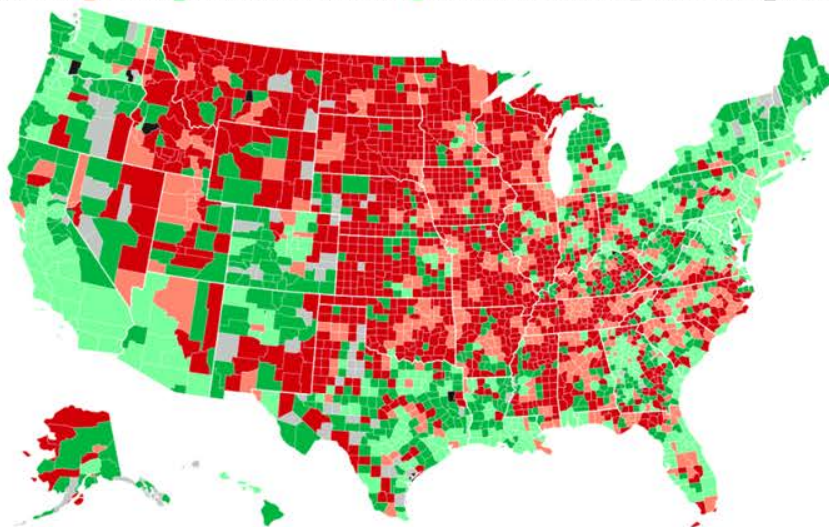


Covid-19 Red Zones, October 4-10

Red-zone counties have a one-week infection rate of 100 or more new cases per 100,000 population.

New Cases over a Seven-Day Period

■ Non-metro Red Zone ■ Metro Red Zone ■ Non-metro, New Infection Rate Below 100 per 100k ■ Metro, New Infection Rate Below 100 per 100k ■ Non-metro, No New Cases ■ Metro, No New Cases





In/Tangible European Heritage:
Visual Analysis, Curation & Communication



Comprehensive Underwater
Intervention Information System



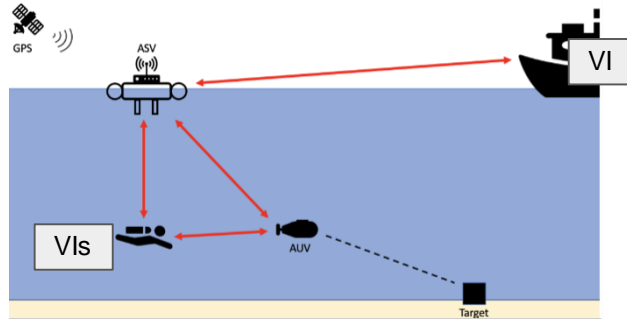
Virtualisation and Multimodal Exploration
of Heritage on Nazi Persecution



Accelerating algae product developments
in Baltic and North Sea



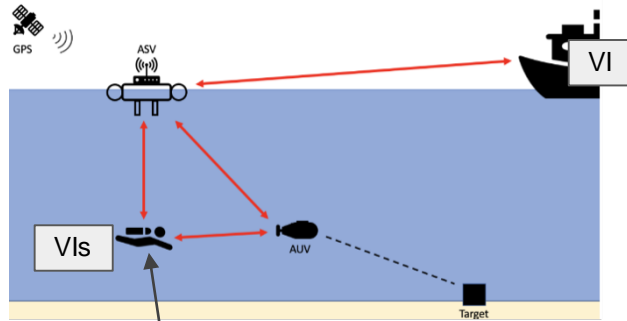
Comprehensive Underwater Intervention Information System



A screenshot of the CUIIS software interface. The interface is divided into several sections. On the left, there is a sidebar with a search bar and several control panels: "Map Layers" (containing "Satellite Overlay"), "MIRE Co-Ordinates" (displaying a grid of red and green blocks), "Map Projections", and "Area of Interest" (with a red map icon). Below these are "Actions" and "Medical Overview" sections. The "Actions" section lists "Diver 1" (highlighted in yellow), "Diver 2", "AUV 1", and "AUV 2". The "Medical Overview" section lists "Diver 1" (1630PM, 27% O2), "Diver 2" (1230PM, 70% O2), and "Diver 3" (1240PM, 88% O2). The main area is a satellite map showing a red-shaded "Area of Interest" and several blue circular icons representing divers and AUVs. At the bottom, a "Mission Status, On Track" section displays a timeline of "Activity 1" through "Activity 5" with progress bars and status indicators.



Comprehensive Underwater Intervention Information System



Stefan

In the requirements for developing the diving suit, do we consider "gender" at all? I would assume that there would be differences for male and female divers wrt to the requirements we discuss, right?

Consortium

I don't believe that we have any requirements that states something about gender. However, we do have some challenges in placing sensors that requires that we consider the differences in the physiology.

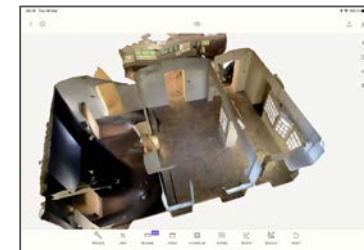
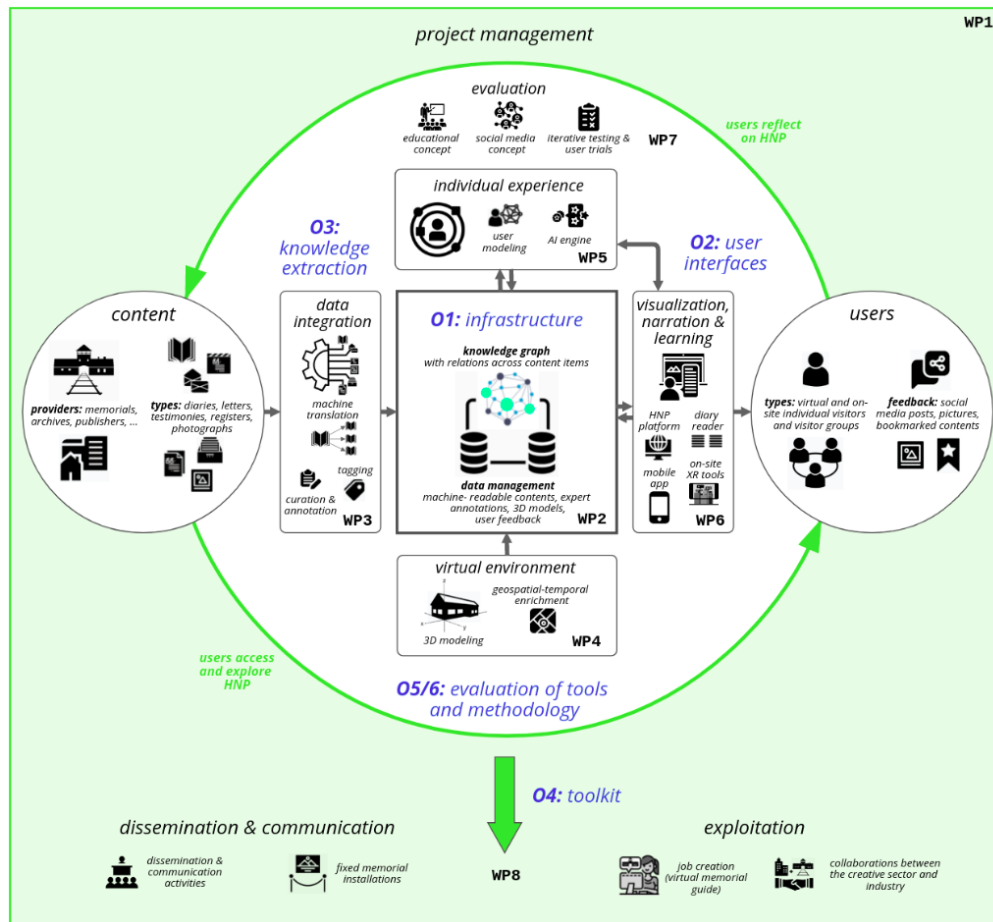
Stefan

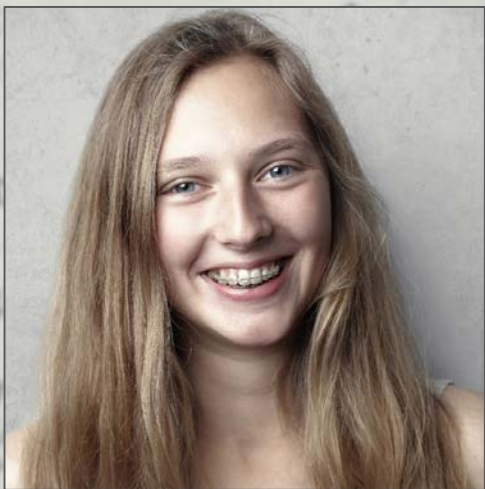
...we are essentially designing the suit for male physiology, right?

Consortium

...I am not an expert here. They could also be unisex.

I am sure the dry suites has some differences in cuttings depending the sex but maybe flexible under suit is unisex... ?

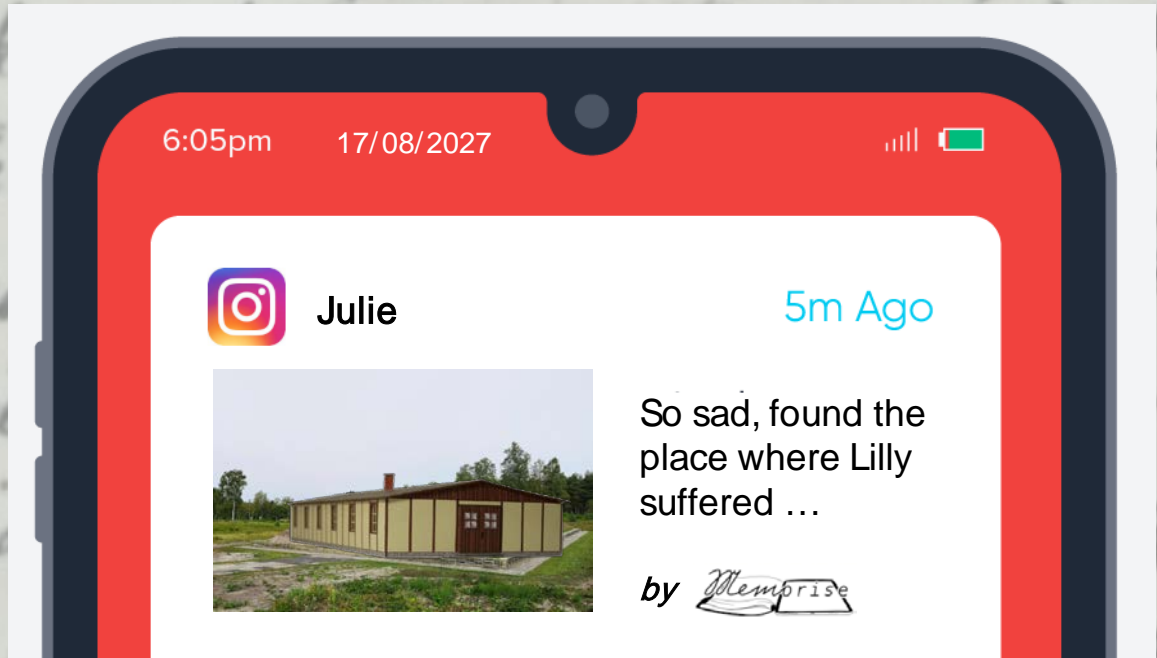




& Memorise

03/1998

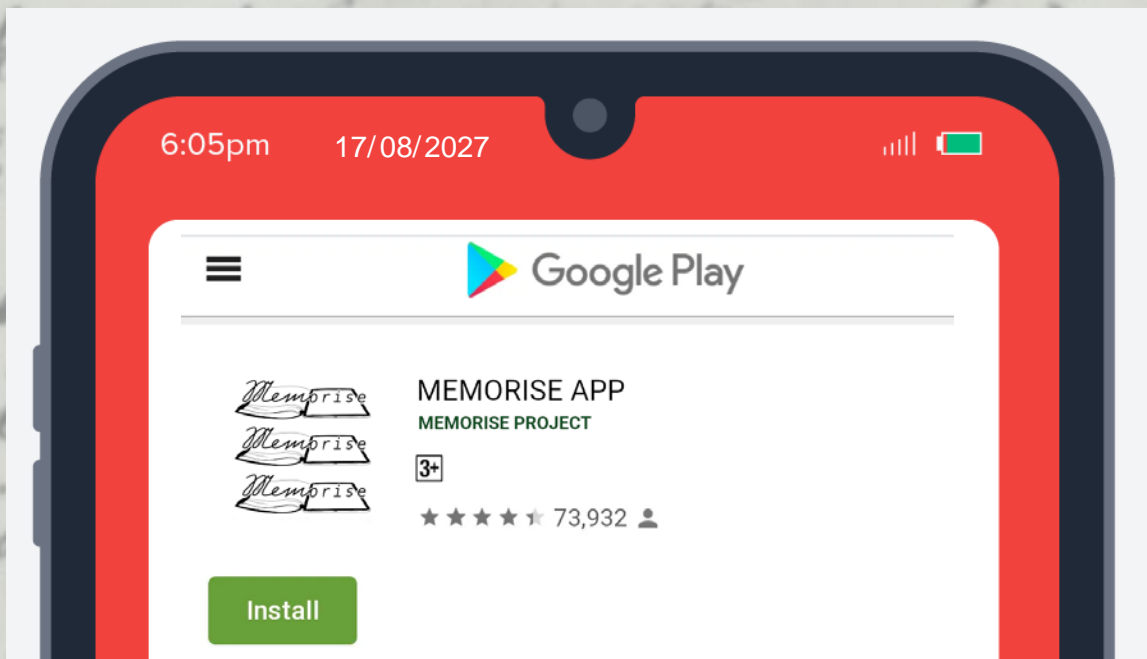
2027



Social Media Concept

03/1998

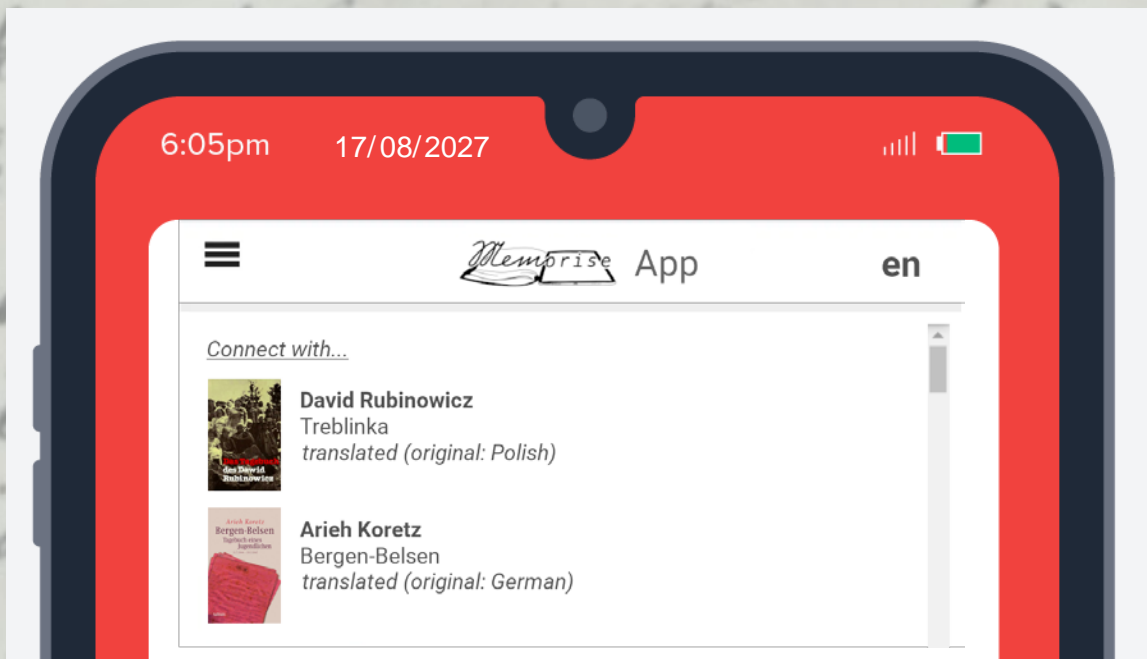
2027



Smartphone App

03/1998

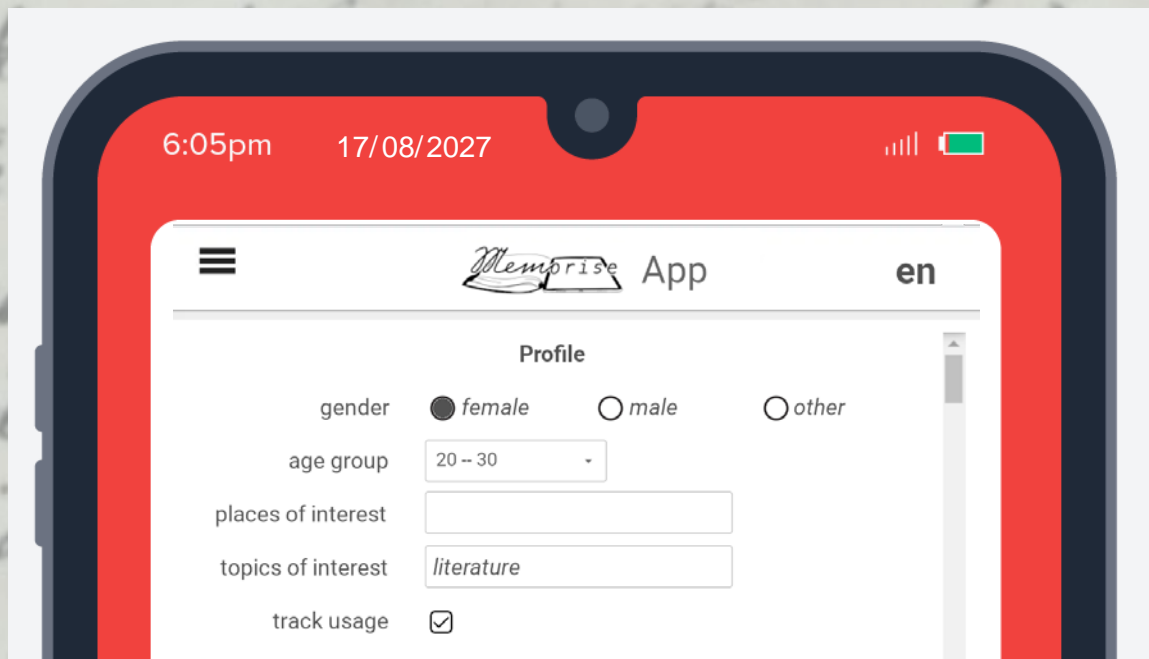
2027



Balanced selection of source material regarding gender, age, nationality (ethnicity), religion, and impairment.

03/1998

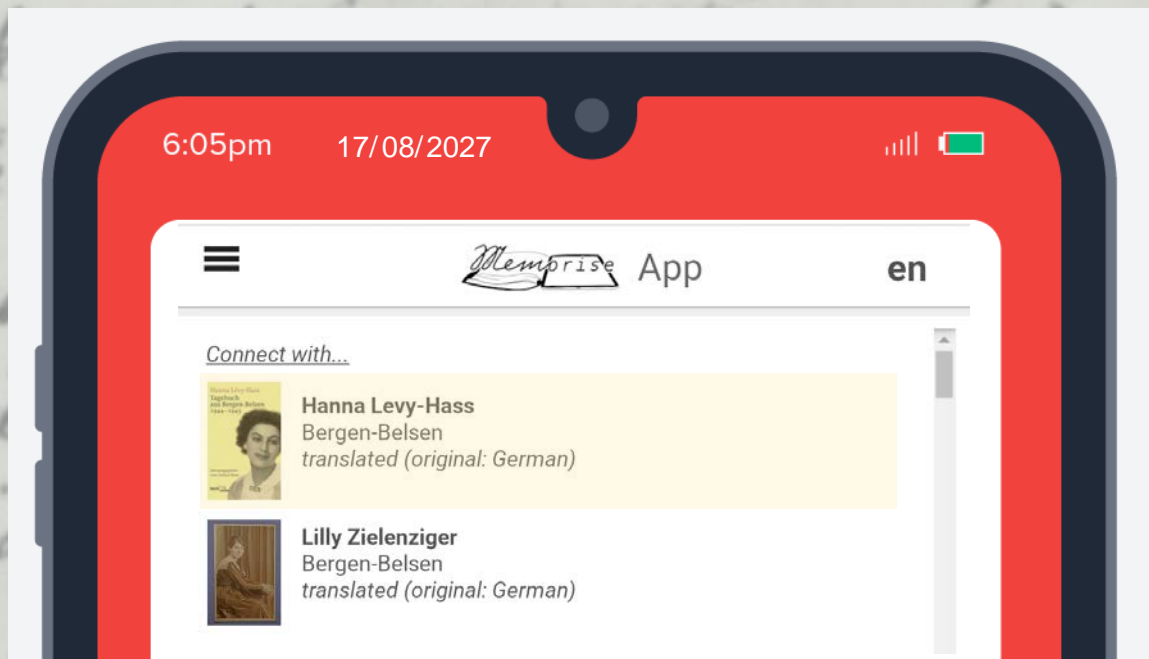
2027



Individual experience module

03/1998

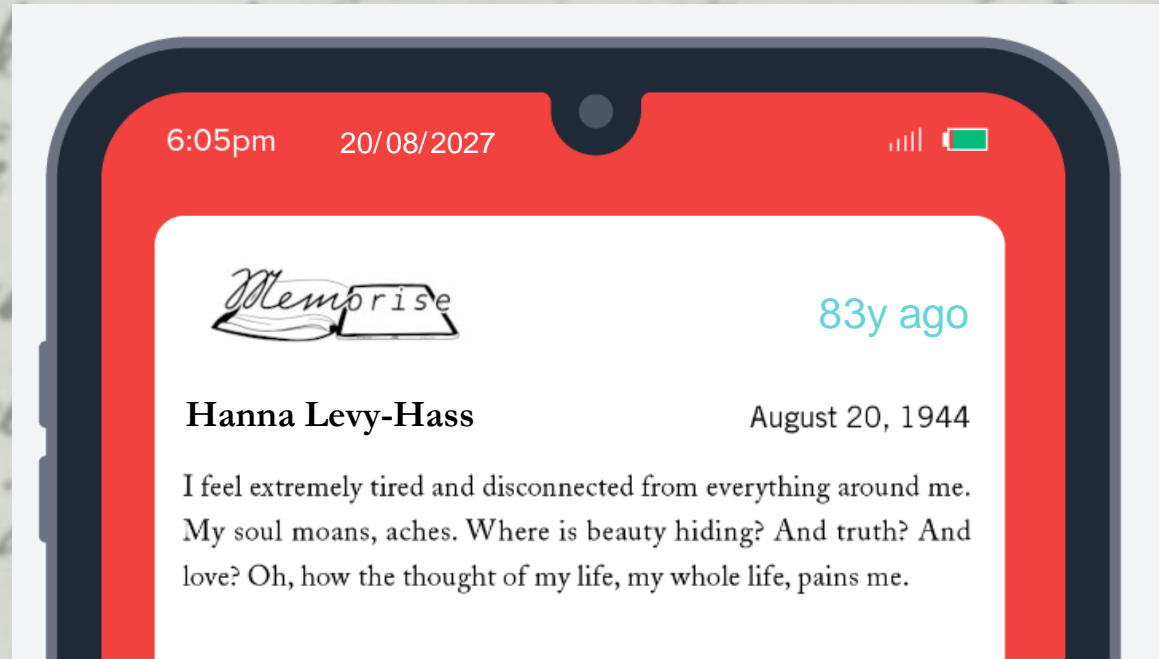
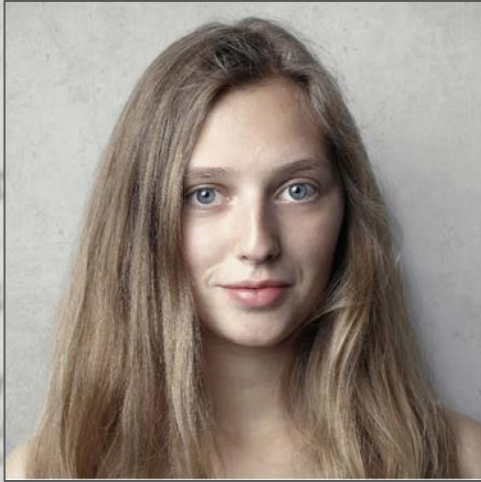
2027



Individual experience module

03/1998

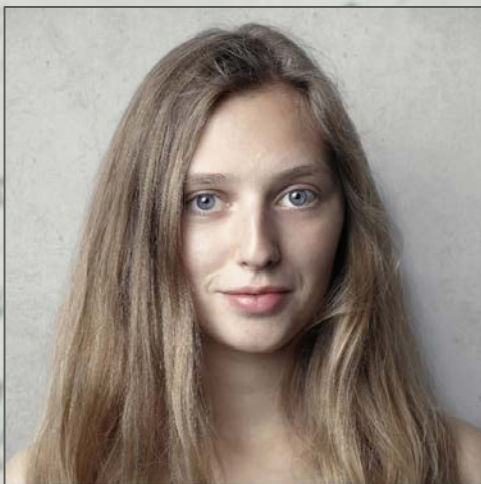
2027



Social Media Concept

03/1998

2027



Knowledge graph (enables diversity-aware queries)
Neutrally designed on-site interactives (XR)

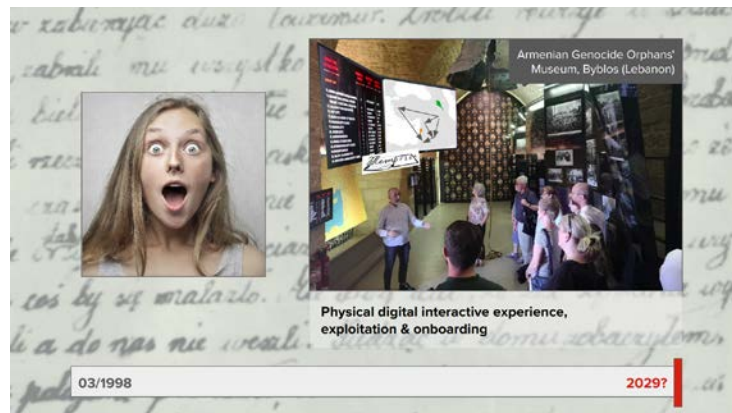
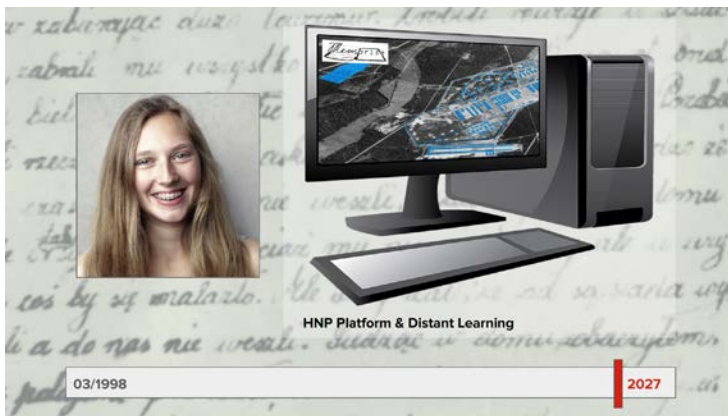
03/1998

2027



Virtualisation and Multimodal Exploration of Heritage on Nazi Persecution

- gender-balanced user studies, avoiding stereotypes
- workshop “On gender/diversity and metadata”
- gender/diversity-aware text processing
- gender/diversity-aware exhibition & education



The Gender Dimension in Visual Interface Design Projects



In/Tangible European Heritage:
Visual Analysis, Curation & Communication



Comprehensive Underwater
Intervention Information System



Virtualisation and Multimodal Exploration
of Heritage on Nazi Persecution



Accelerating algae product developments
in Baltic and North Sea



Funded by
the European Union

This project is funded by the European Union's Horizon Europe research and innovation programme under grant agreement No. 101061016.

